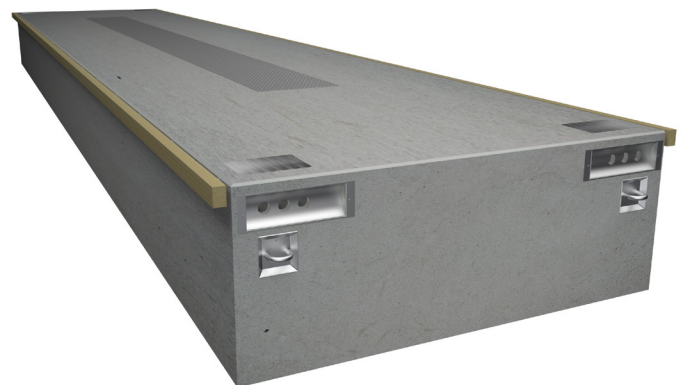


TANK-PONTOONS



SF MARINA is a Swedish company, internationally active and with extensive experience from successful marina installations all over the world. Our pontoons were developed and adapted to the Scandinavian climate with autumn hurricanes and harsh winters. Through the use of high quality materials and with a rigorous manufacturing process, the pontoons enjoy a long life span.

Our tank-pontoons are each custom made in different sizes, to the client's requirements and local authority regulations. We produce pontoons with built-in tanks, but also pontoons fed from tanks located on shore. Septic or waste water suction apparatus and fuel pumps for petrol and diesel can be installed. The pontoons are anchored by piles or chains and mooring blocks. A substantial advantage with floating pontoons is that they are easily accessed by boats, regardless of the level of water.



EXAMPLES

The pontoon is manufactured in accordance with the Swedish Concrete Standards BBK 94

Example 1

Length: 10m
 Width: with wooden fender 3.25 m
 Width: without wooden fender 3 m
 Height: 1200mm
 Tank: 2 x 5 m³

Example 2

Length: 20m
 Width: with wooden fender 4.25 m
 Width: without wooden fender 4 m
 Height: 1800mm
 Tank: 4 x 5 m³ or 2 x 10 m³

All concretepontoons: Concrete: C40/50., Air 6%. Vct 0.4.
 Reinforcement.: Nps 500, Ks 500, Ks 600. Styrofoam: min. 65kPa. Cast in sockets: Stainless. Mooring eyes: VFZ 40-50mm.
 Wooden fender: Pressure treated pine 95 x 145 mm. Dimensioning and manufacturing: According to BBK 94.
 Alternative dimensions made upon request. We reserve the right to change the design without notifying.